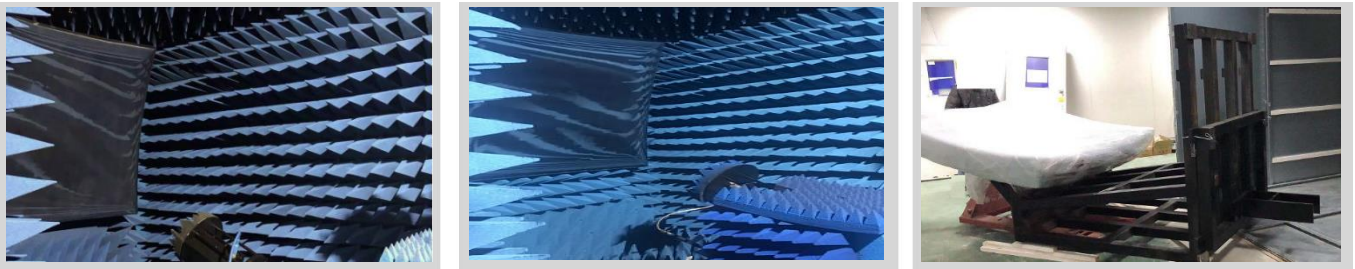
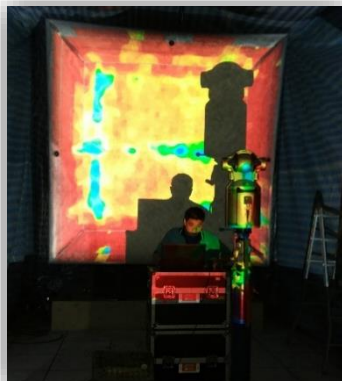
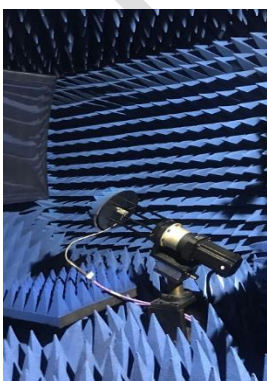


Robotic Compact Range Indoor Farfield Testing System

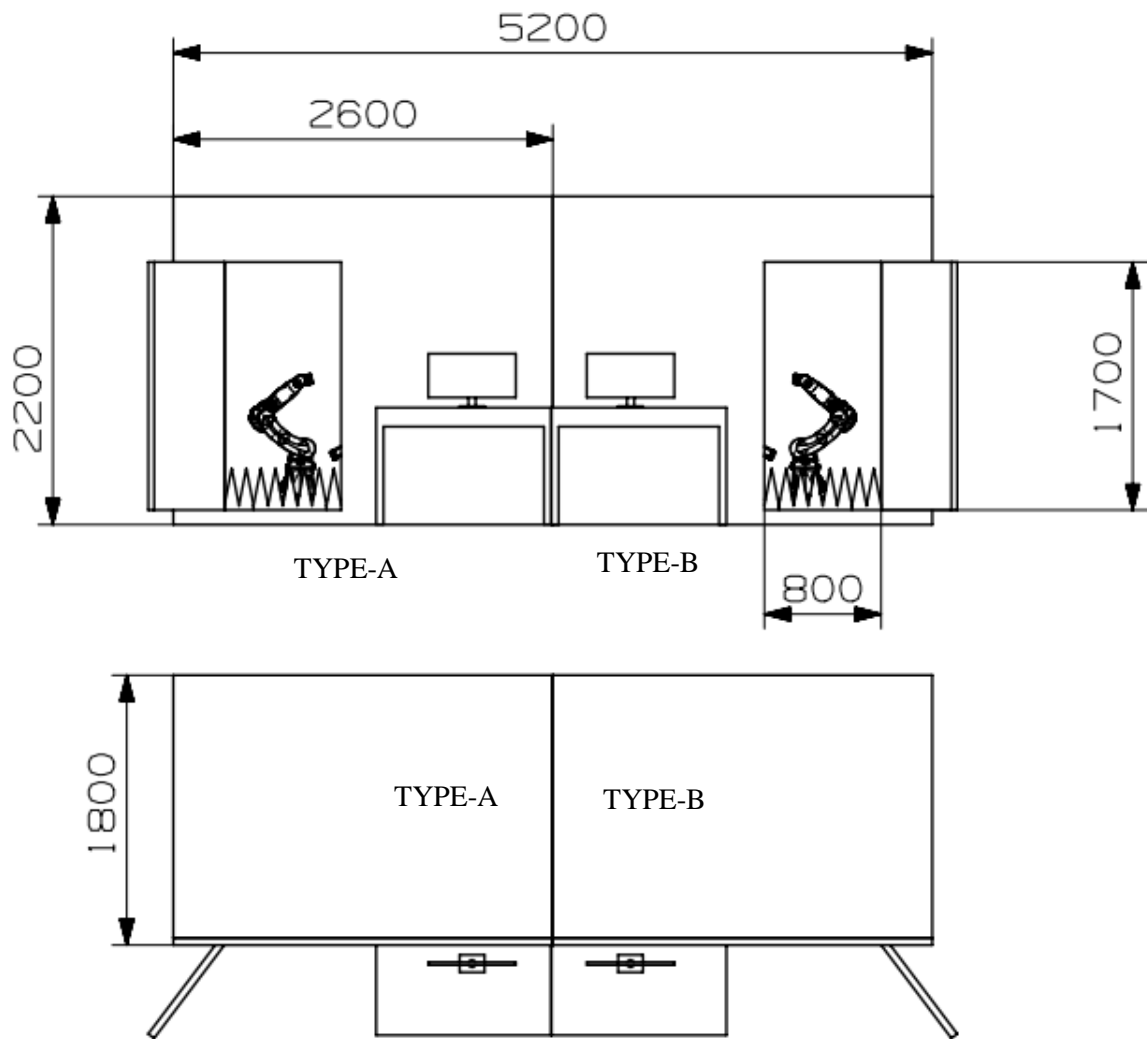


Specifications

Frequency of Operation, Typ	18-110Ghz
Surface RMS Error	20um RMS
Back Slash Angle	<0.05 deg (opt-Mot)
Coordinates Calculation	3 axis manual adjustment
LOS Alignment DOF	6 DOF
System Drive	Full Servo Drive/ Pol Axis Step Drive
Testing Distance, Typ	<2m
Rotation Speed	0.1° /s ~ 4° /s
Angular Resolution, Typ	<=0.02deg RMS
Tx Side Max Weight	>=5kg
Quite Zone size	>0.3m x 0.3m x 0.3m
Amplitude Tapering	<= 1dB
Amplitude Perturbation	<= +/- 0.5 dB
Phase Perturbation	≤ ±7° (50~110GHz)
Size of Testing Table, Typ	0.5m x 0.5m
Software Drive Support TX Station	6 Axis F&MM Ind Robot



Mechanical Structure Options: (Type A or Type B)



Product Illustration:

